

Ekaya

EXCLUSIVE RESIDENCES

BY SRIVARI



[Your Corner In The World]



SRIVARI

Contents

Architects Note	03
At a Glance	04
At The Heart Of Coimbatore	05
Life at Ekaya	06
Specifications	17
Our Residences	23
Area Details	30
About The Developer	31
Disclaimer	32





Architect's Note

When I first imagined Ekaya, I thought of mornings that begin in sunlight, of children's voices carrying across a garden, and the smile of a neighbour.

From that thought grew the idea of just eight residences in the heart of Coimbatore — each one placed to give you space, stillness, and a sense of belonging. Here, every line of design is drawn around how life naturally unfolds: from brewing tea in the kitchen to evenings full of warmth and conversation. Every habit and rhythm finds its place, quietly in tune with you.

I hope that when you live here, you realise that this is more than owning a villa. It's the privilege of finding your special place in the world. One that belongs entirely to you.
Ekaya is your corner in the world.

【 Ar. Pramod Balakrishnan
EDIFICE 】

At a Glance



EXCLUSIVE ENCLAVE

Eight one-of-a-kind 4-BHK Villas, designed for modern living



SIZES

5738, 5770 & 5912 sq.ft
(Super Built-up Area)



LOCATION

Easily connected to Race Course, Avinashi Road, close to Trichy Road, and located in the heart of the city.



A WORLD BEYOND OUR VILLA

Our signature Clubhouse Srivari Vivarea brings together celebration, recreation, and rejuvenation with its banquet hall, games arena, and a fitness centre.



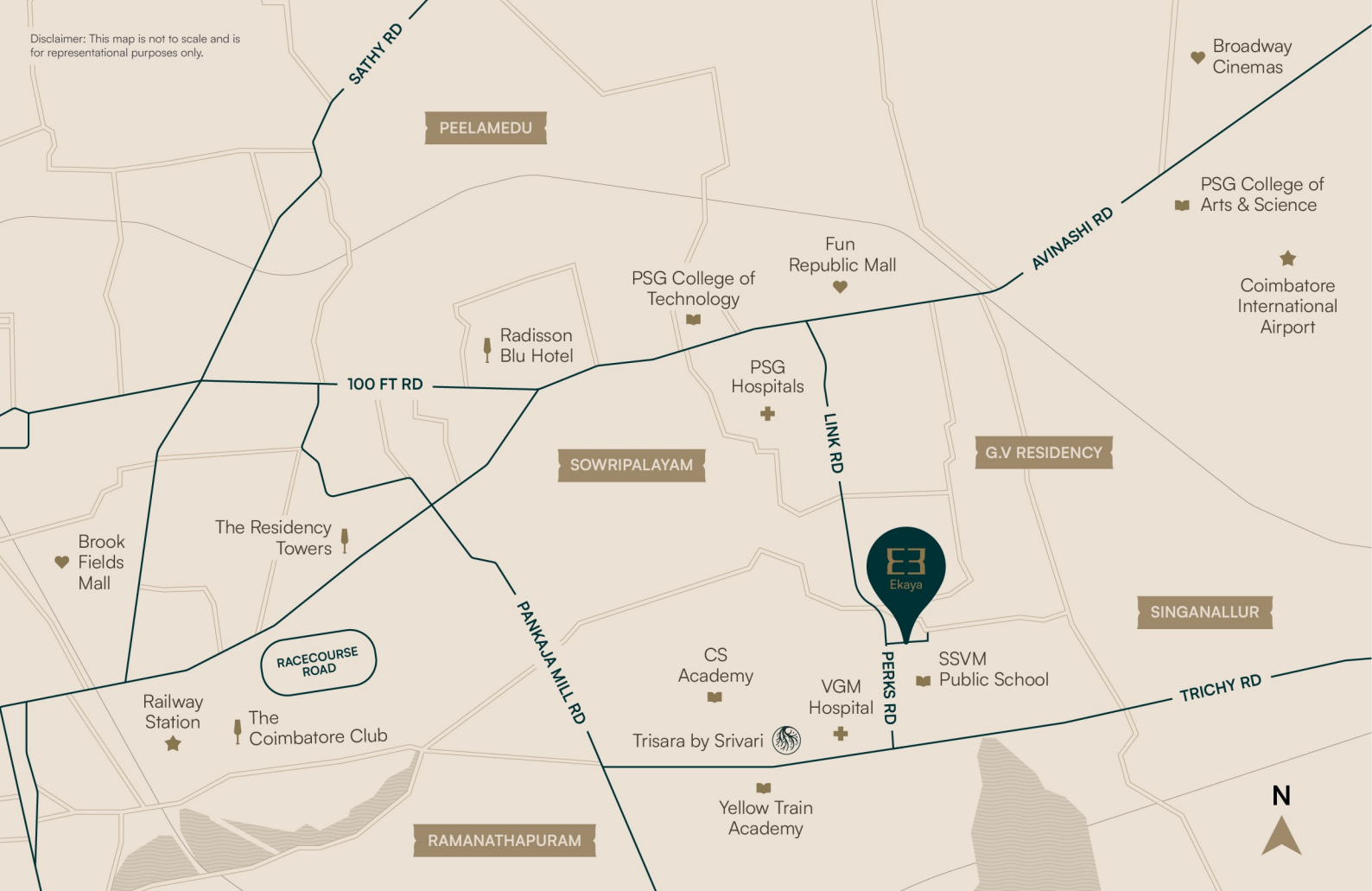
LIVING WITH HEIGHT AND LIGHT

Double-height landscape terrace, private elevators, and a dedicated media room that make comfort feel effortless and expansive.



NATURE AT YOUR THRESHOLD

Landscaped gardens, entertainment decks, and private terraces create a seamless flow between indoors and outdoors.



Ekaya - At The Heart Of Coimbatore

SCHOOLS

SSVM School of Excellence	450 mts
Perks Matriculation Higher Secondary School	550 mts
C S Academy, Trichy Road	2 kms
Yellow Train Academy	2 kms

COLLEGES

PSG College of Technology	3.2 kms
Nirmala College	4.8 kms
PSG College of Arts & Science	5.3 kms

HOSPITALS

VGM Hospital	1 kms
Ortho One Hospital	2 kms
PSG Hospital	2.5 kms
GEM Hospital	3.4 kms

CLUBS & HOTELS

Radisson Blu Hotel	4.6 kms
TAJ Vivanta	4.6 kms
Coimbatore Cosmopolitan Club	4.9 kms
The Residency Towers	5.2 kms
The Coimbatore Club	5.6 kms

RECREATION

Fun Republic Mall	2.6 kms
Broadway Cinemas	7.1 kms
Brook Fields Mall	8.2 kms

TRANSIT

Coimbatore Railway Station	6.4 kms
Coimbatore International Airport	6.8 kms

{ Life at



Ekaya }



Your Corner For *Solitude*

Amidst Coimbatore's most connected neighbourhood, Ekaya offers the privilege of privacy. Lush landscapes and ample space with thoughtful planning ensures life flows without intrusion.



EXCLUSIVE ENCLAVE

Just 8 premium residences for a community that values personal space.



RICH NATURAL RETREATS

Lush green spaces offer calm corners and open views that bring the outdoors closer.



PRIVATE TERRACES

In select residences, bedrooms flow into terraces that overlook the landscaped gardens and driveways.





Your Corner For *Design*

Every space is shaped to move with your day. Light that follows you from room to room, air that flows easily, and layouts that create both openness and retreat. The proportions feel generous, the details purposeful, the transitions seamless. The architecture quietly works in your favour, so life feels balanced and effortless.

SPACIOUS 4 BHK RESIDENCES

Ranging from 5,738 to 5,912 sq. ft. across G+2 floors, the residences offer thoughtfully designed spaces for refined everyday living.



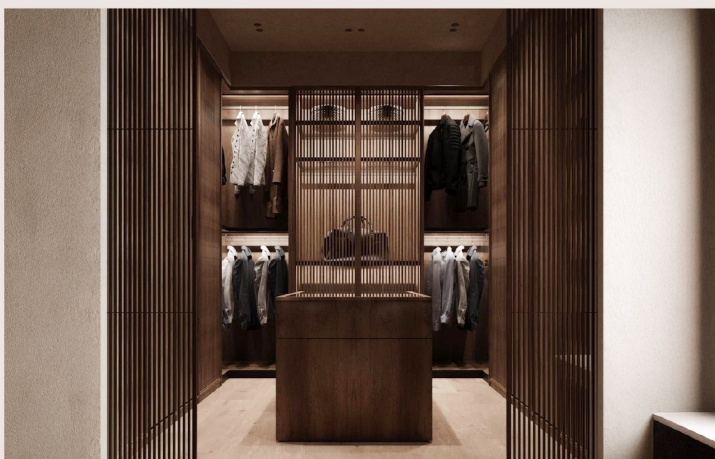
NATURAL LIGHT & AIR

Homes are planned for ventilation and daylight throughout.



WALK-IN WARDROBES

Intelligent design meets indulgent space, ensuring your retreat remains uncluttered.



PRIVATE ELEVATOR ACCESS

Thoughtfully designed private elevator access for effortless mobility and everyday ease.





Your Corner For *Gathering*

Some spaces are made to be shared. Living rooms open wide for laughter, and gardens become the backdrop for memorable weekends. Beyond your home, the Clubhouse Vivarea is designed as an extension of this spirit. From quiet evenings of indoor games to large family celebrations, it is a space that brings people together.



EXPANSIVE
LIVING AND
DINING

Designed for warmth with spacious living and dining areas that open effortlessly to the outdoors.



PRIVATE
GARDENS &
DECKS

Perfect for hosting, entertaining, or simply enjoying evenings outdoors.



CLUB
VIVAREA

A three-level clubhouse designed for leisure and gatherings.



BANQUET
HALL

Spaces for parties, celebrations, and community events.





Your Corner For *Rest &* *Relaxation*

The most valuable luxury is a space that restores you. At Ekaya, bedrooms are designed as private sanctuaries — quiet, expansive, and connected to nature. Morning light filters in gently, views open to greens, and balconies extend the sense of calm outdoors. Whether it's the stillness at the end of the day or the comfort of waking slowly.



SPACIOUS BEDROOMS

Large, airy rooms designed for comfort and ease.



HOME AUTOMATION

Intelligent systems integrated for ease of movement, senior comfort, and seamless living.



BALCONY WITH A VIEW

Expansive and double-height, this serene corner becomes your everyday retreat.





Your Corner For *Recreation*

At Ekaya, there's room for play, for movement, and for pause. Spaces invite you to challenge yourself, to slow down, or to simply enjoy a moment of fun. A morning workout that sets the tone for the day, an afternoon game that drifts into laughter, a stroll with children or pets as the sun sets. These are the rhythms that make life here feel complete.



FITNESS &
WELLNESS
ZONE

Fully equipped
gymnasium for
everyday balance.



INDOOR
GAMES ROOMS

A relaxed setting for
recreation and play.



MEDIA
ROOM IN
EVERY VILLA

Private entertainment
spaces built into each
residence.



PRIVATE
WALKWAYS

Landscaped walkways
where every family
member, including pets,
feels at home.



Here, everything
comes together



as one, one for you.



BUILDING STRUCTURE

- Seismic Zone III RCC frame Structure with Block walls.
- Internal and External walls as per structural requirement.



FLOORING & DADDOING

- Living/Dining/Family/Study/Foyer: Imported Marble.
- Master Bedroom — 2nd Floor: Imported Marble.
- All other Bedrooms & Media Room: Premium Branded Laminated Wooden Flooring.
- Kitchen: Premium Matt finish Glazed Vitrified Tiles.
- Utility: Matt finish Vitrified Tiles; Walls will be finished with polished Vitrified Tiles up to sill height.
- Utility: Matt-finish vitrified tiles + wall dado up to sill height.
- Decks: Wood Finish Vitrified Tiles.
- Toilets: Premium Matt finish Glazed Vitrified Tiles; Walls to be finished with polished Vitrified Tiles up to 8' / False ceiling.



KITCHEN / UTILITY

- Stainless Steel single bowl sink in Utility.
- Premium range Grohe or similar CP fixture in Utility.
- Provision for drinking water purifier in Kitchen.
- Exhaust fans provided in Kitchen.



BATH

- Premium range sanitary ware of Duravit or equivalent with table top wash basin counters.
- Hot and cold wall mixers of Premium range like Hans Grohe or equivalent for overhead showers and basin.
- Concealed cistern of Geberit make or equivalent.
- Glass Shower partition for all bathrooms.
- False Ceiling provided in all baths.
- Exhaust fans provided in all baths.



LAUNDRY ROOM

- Drying yard in every Residence with provision for Washer & Dryer.





ELECTRICALS

- Electrical modular switches of Legrand make or equivalent.
- Fire resistant Electrical wires of Finolex make or equivalent.
- Adequate Lights, Fans & Power points across the residence.
- Ceiling Light fixtures in Decks.
- ELCB & MCB in Central Distribution Board in each Residence.
- Kitchen: Future ready Junction box from which adequate electrical points can be drawn for personalization.



PAINTING

- Internal Painting: Putty- finished surface coated with Plastic Emulsion.
- External painting: Weather proof paint with textured finish as prescribed by Architect.



INTERNAL STAIRCASE

- MS Railing with enamel paint as per Architect Specification.
- Marble or Granite for Staircase.



JOINERIES

- Main Door: Solid engineered wooden door polished on both sides with hardware of Premium make.
- Internal Door: Solid engineered wooden doors with veneer polished on both sides with hardware of premium make.
- Baths: Engineered wooden doors with veneer polish on the front and laminated behind with hardware of premium make.
- Balcony Doors: Aluminum shutters in a track sliding system.
- Helper Room / Bath: Laminated Flush Door with hardware of premium make.



WINDOWS & HAND RAILS

- Aluminum windows with sliding / casement shutters as per Architect's Specifications.
- Grills: Mild Steel Grills with flat / square rods for all windows.
- Baths: Good quality Aluminum ventilators with frosted glass louvers.
- Balcony decks with MS railings coated with zinc chromate anti corrosive primer finished with enamel paint.



IN HOUSE AMENITIES

- Home Automation: Home Automation for Light control will be provided.
- Home Elevator: An elevator of reputed make will be provided for each Residence with adequate capacity.
- Air Conditioner: VRV / VRF system air conditioning in all Bedrooms.
- False Ceiling: Single Level Gypsum False Ceiling including Toilets.
- Power Back up: Full power back up for common areas, limited back up for each Residences.
- Communication: Video Door Phone with Intercom facilities will be provided in all Residences.
- Water: Water Treatment Plant will be provided for Domestic use. Corporation water supply point in the kitchen for Drinking & Cooking.
- Gas: Piped Gas into Kitchen will be provided.



COMMON FACILITIES / AMENITIES

CLUB HOUSE

- Three level Air-conditioned Clubhouse with Elevator.
- Gymnasium with all Premium Fitness equipment.
- Indoor Games.
- Multipurpose Hall.v
- Landscape Gardens with plenty of Trees and Flowering Plants.

SECURITY SYSTEM

- Secured Gated Community with Access control at Entrance and Exits.
- CCTV Cameras will be provided at strategic locations across the premises.

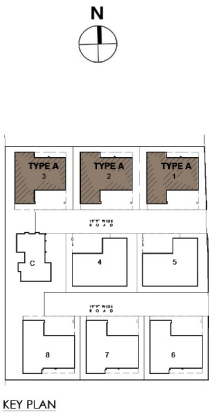
Our Residences



Blueprints for
modern living

Type A

GROUND FLOOR



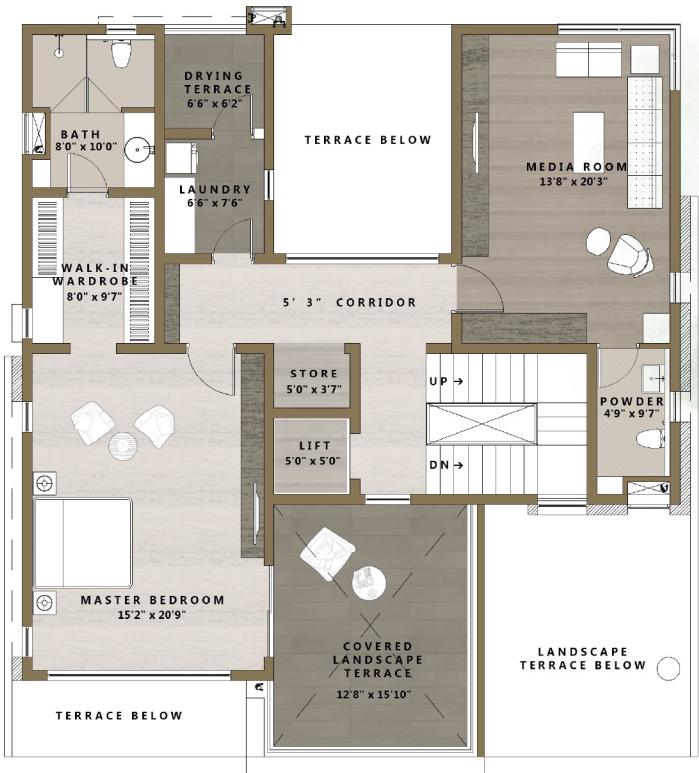
Carpet Area- 4,563.90 Sq.Ft
Super Built-up Area- 5738.00 Sq.Ft

FIRST FLOOR



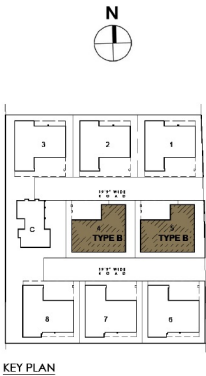
KEY PLAN

SECOND FLOOR



{ Type B }

GROUND FLOOR

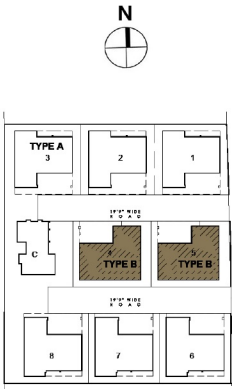


Carpet Area- 4,552.21 Sq.Ft
Super Built-up Area- 5770.00 Sq.Ft

FIRST FLOOR



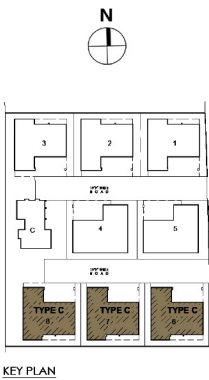
SECOND FLOOR



KEY PLAN

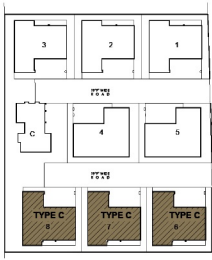
{ Type C }

GROUND FLOOR



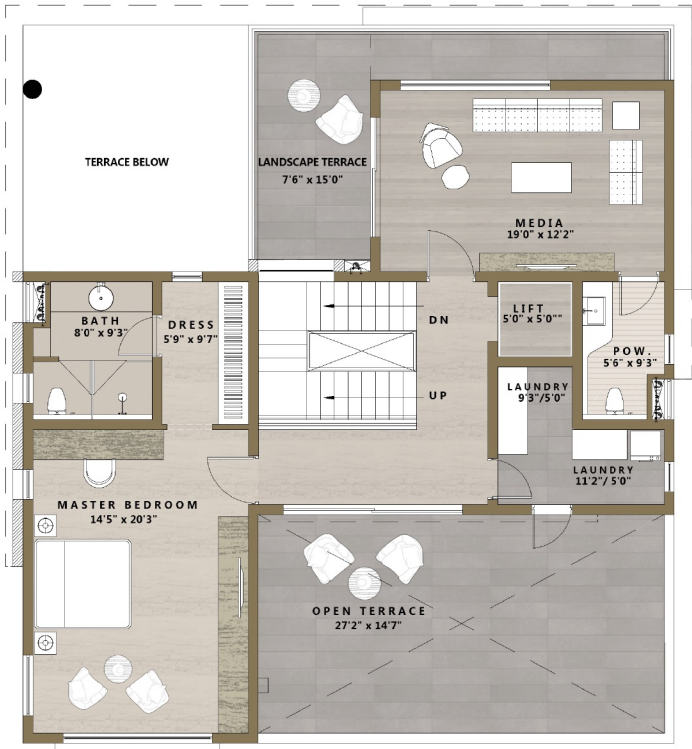
Carpet Area- 4,795.29 Sq.Ft
Super Built-up Area- 5912.00 Sq.Ft

FIRST FLOOR



KEY PLAN

SECOND FLOOR



Area Details

VILLA NOS	BEDROOMS	VILLA FACING	CARPET AREA (Sq.Ft)	SUPER BUILT UP AREA (Sq.Ft)	TOTAL LAND AREA INCLUDING UDS (Sq.Ft)
A1	4BHK	EAST	4,563.90	5738.00	3993.57
A2	4BHK	EAST	4,563.90	5738.00	4042.65
A3	4BHK	EAST	4,563.90	5738.00	4070.88
B1	4BHK	NORTH	4,552.21	5770.00	3898.52
B2	4BHK	NORTH	4,552.21	5770.00	4034.79
C1	4BHK	EAST	4,795.29	5912.00	3975.54
C2	4BHK	EAST	4,795.29	5912.00	3862.50
C3	4BHK	EAST	4,795.29	5912.00	3963.28



About the Developer

For over 35 years, Srivari has shaped Coimbatore's skyline with purpose and craft. Our approach is rooted in quality, craftsmanship, and sustainable design, allowing us to build spaces that age gracefully and live meaningfully. Our work reflects a discipline refined over decades where every detail is guided by integrity, and every design, by intent.

Our presence runs deep across Coimbatore's most cherished neighbourhoods, from the tree-lined avenues of Race Course to the vibrant heart of R.S. Puram where we've completed ten projects in each. It's a record that speaks of enduring relationships and trust built over time.

Financial strength, technical expertise, and long-standing collaborations anchor our practice. Led by an experienced team, we continue to evolve with the city, designing spaces that balance luxury with simplicity, function with feeling, and modern living with lasting value.

At Srivari, we believe our excellence shows up with consistency — growing quietly, project after project, home after home.

www.srivari.co.in

Tel: 0422 — 4749999

Head Office: Srivari Gokul Towers,
Second Floor, 108, Race Course, Coimbatore - 641 018.



Disclaimer

This brochure is made available for your review and for information purposes only regarding our project. The contents of this brochure are conceptual in nature and the pictorial landscapes, gardening, artistic works, soft furnishing/furniture, gadgets etc., contained in this communication material are only artistic representations, which are not part of the actual deliverables and cannot be construed or treated to form as part of any agreement or offer from the part of Srivari.

The specifications and other data contained in this brochure are the property of Srivari. The brochure may not be copied, reproduced or distributed in any way or for any purpose whatsoever. In no event shall Srivari be liable for any direct, indirect, incidental, consequential claims arising out of the use of the information provided herein.

The specifications mentioned herein are indicative and are subject to change as per requirements or on the recommendations of experts as marginal variations may become necessary during construction. The product and technology displayed or referred to herein are for manifestation purpose only and the company does not guarantee use of them as part of the deliverables.

Srivari reserves the right to change, remove or add any specification, amenity, plans, service provider, etc., mentioned herein and no objections in this regard will be entertained.

All images in this brochure are indicative only.

*Terms & Conditions apply.

For more details please visit: www.srivari.co.in

Rera Certification Number - TNRERA/11/BLG/0327/2025 dated 26.09.2025

Site Office: No.1 Perks Arch Road, Rajiv Gandhi Nagar, Uppilipalayam, Coimbatore 641 015, Tamil Nadu
Phone: +91 76673 13131 // +91 95974 50505



Ekaya

EXCLUSIVE RESIDENCES
BY SRIVARI

Let's Begin Your Journey Home.

To know more or schedule a private
preview, connect with us at Srivari Ekaya.



SRIVARI